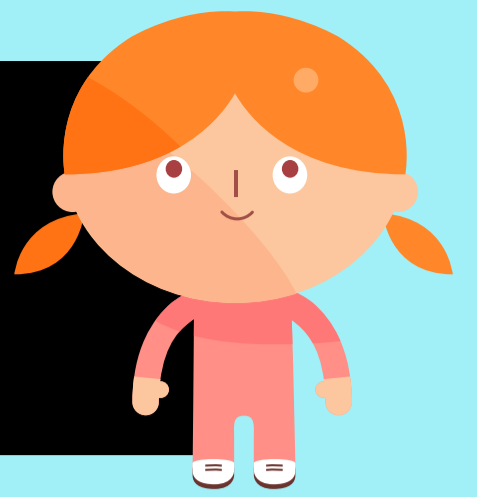
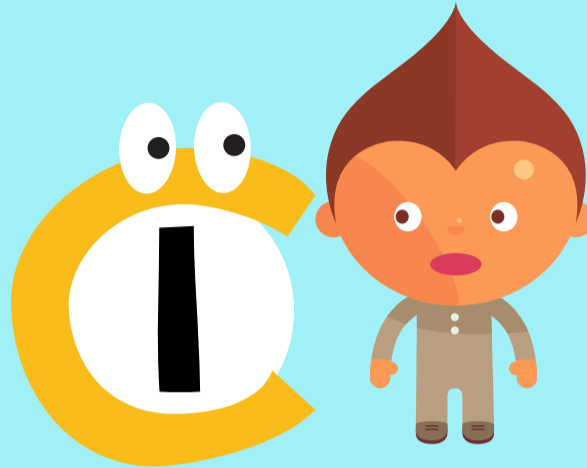


Your Behaviour, Your Choice



To avoid a C1

- Be on Task
- Listen Carefully
- Follow instructions
- Be polite
- Respect Others



If you receive a C1 you will be given a 10 min break time detention

To avoid a C2

- Correct your behaviour in all of the above



If you receive a C2 you will be given a 20 min lunch time detention

Extreme cases could result in this process being Fast Tracked

Time Out

This is a chance to:

- Reflect
- Think about how you return to the class to learn
- Have a discussion with your teacher



Red Card

- Accept you have been given a red card
- You must go straight to student support

Your parents will be contacted and told what you have been doing, you will be given an AFTER SCHOOL DETENTION

